

Floor Plan - Level P1



- SERVICE/SUPPORT
- ELEVATOR
- OFFICE

TOTAL: 162

P1 PARKING

73

- ADA CAR 4
- ADA VAN 2
- COMPACT 48
- COMPACT TANDEM 2
- STANDARD 14
- STANDARD TANDEM 3



Floor Plan - Level P2



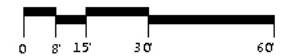
- SERVICE/SUPPORT
- ELEVATOR
- OFFICE

TOTAL: 162

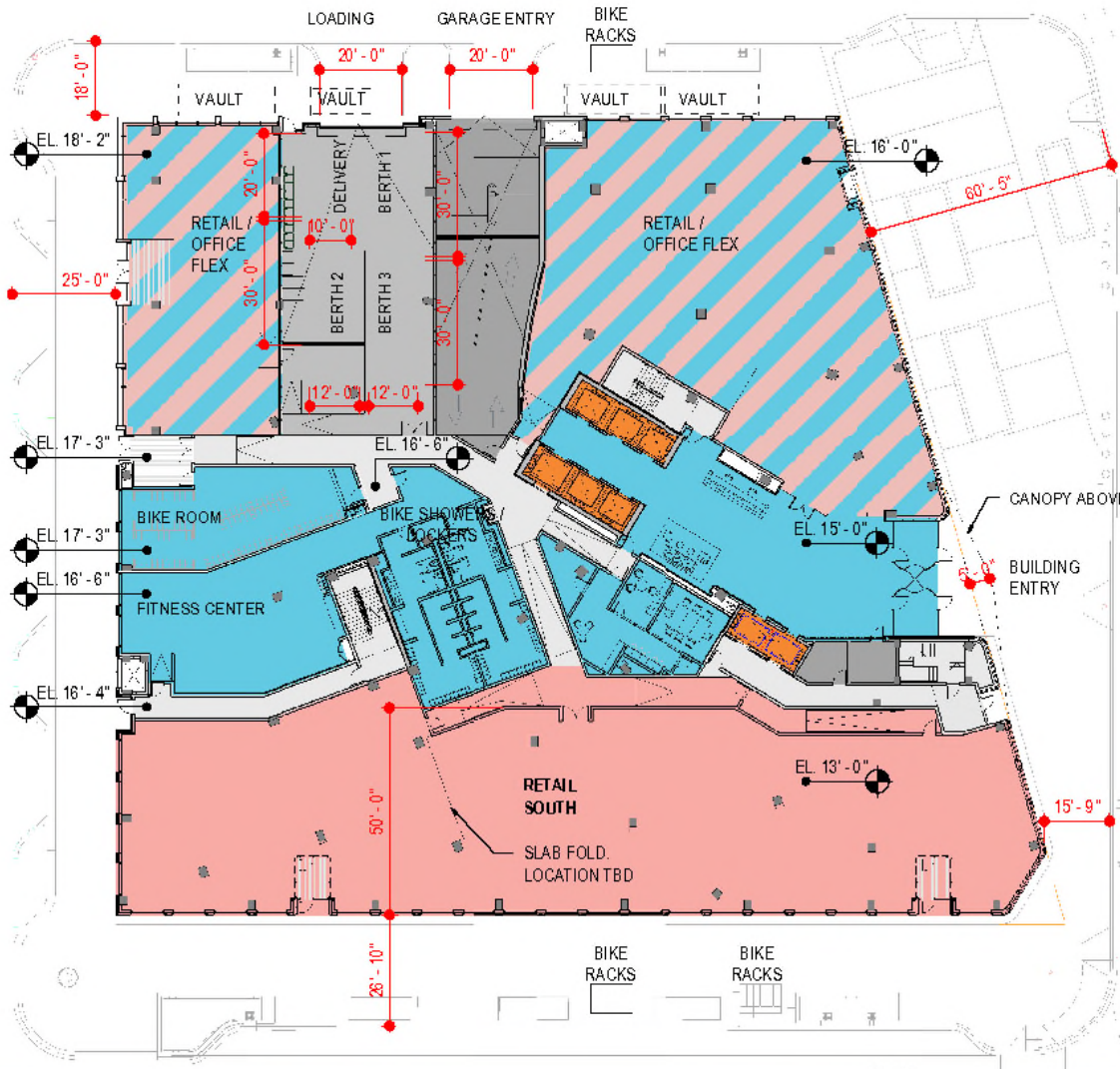
P2 PARKING

- COMPACT 56
- COMPACT TANDEM 4
- STANDARD 26
- STANDARD TANDEM 3

89

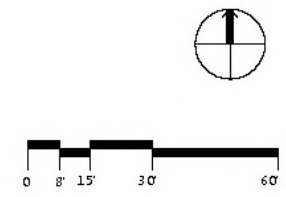


Floor Plan - Level 1



NOTES:
 APPLICANT REQUESTS FLEXIBILITY TO VARY THE LOCATION AND DESIGN OF ALL INTERIOR COMPONENTS, INCLUDING PARTITIONS, STRUCTURAL SLABS, DOORS, HALLWAYS, COLUMNS, STAIRWAYS, AND MECHANICAL ROOMS, PROVIDED THAT THE VARIATIONS DON'T CHANGE THE EXTERIOR CONFIGURATION OF THE BUILDING.

- CIRCULATION
- SERVICE/SUPPORT
- ELEVATOR
- OFFICE
- RETAIL



Level 1 - Activation at New Jersey Avenue - Reference Images

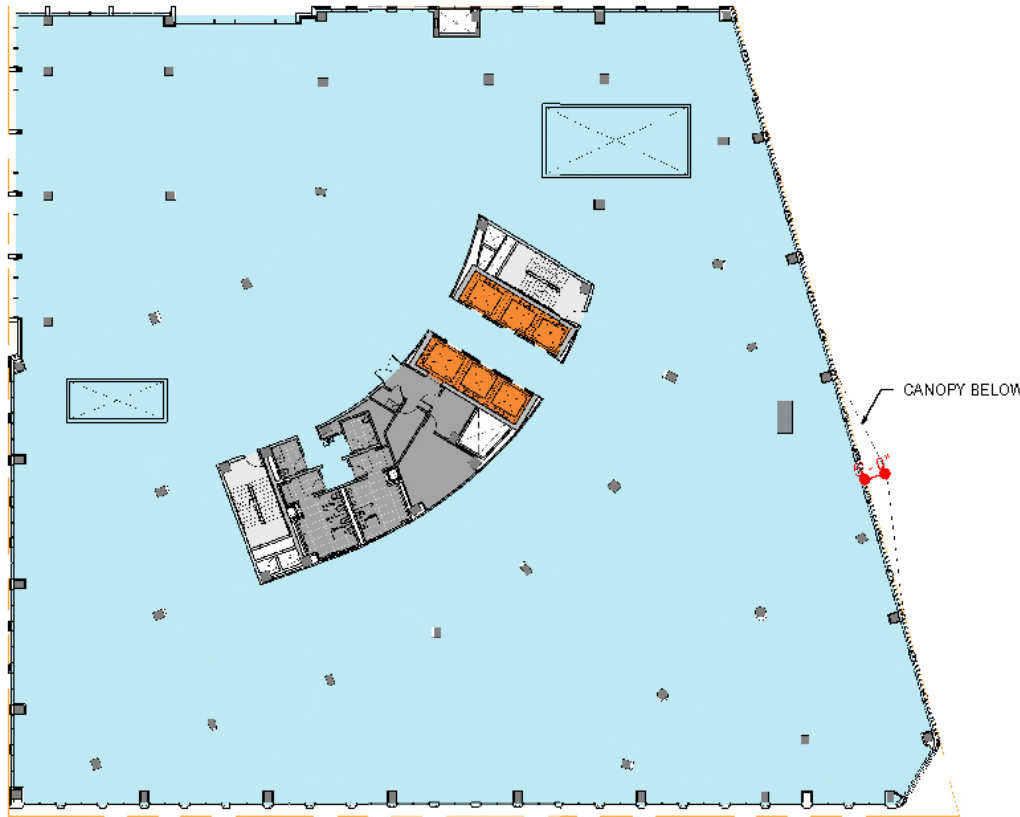


Floor Plan - Level 2

NOTES:

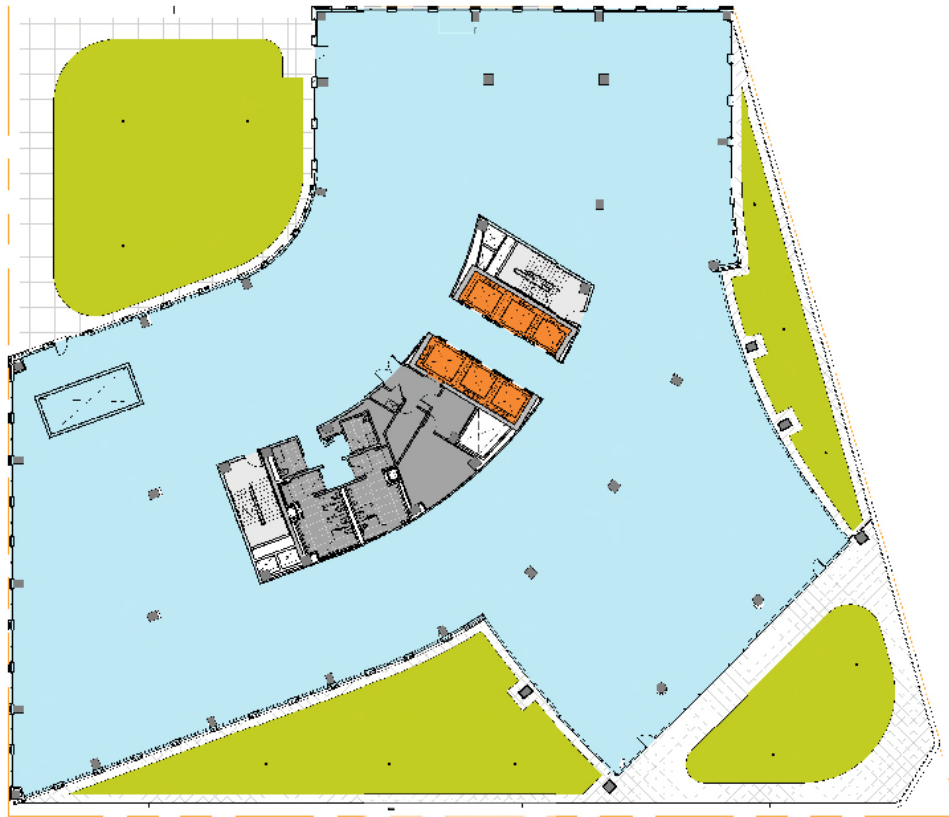
APPLICANT REQUESTS FLEXIBILITY TO VARY THE LOCATION AND DESIGN OF ALL INTERIOR COMPONENTS, INCLUDING PARTITIONS, STRUCTURAL SLABS, DOORS, HALLWAYS, COLUMNS, STAIRWAYS, AND MECHANICAL ROOMS, PROVIDED THAT THE VARIATIONS DON'T CHANGE THE EXTERIOR CONFIGURATION OF THE BUILDING.

- CIRCULATION
- SERVICE/SUPPORT
- ELEVATOR
- OFFICE



Floor Plan - Level 3

NOTES:
APPLICANT REQUESTS FLEXIBILITY TO VARY THE LOCATION AND DESIGN OF ALL INTERIOR COMPONENTS, INCLUDING PARTITIONS, STRUCTURAL SLABS, DOORS, HALLWAYS, COLUMNS, STAIRWAYS, AND MECHANICAL ROOMS, PROVIDED THAT THE VARIATIONS DON'T CHANGE THE EXTERIOR CONFIGURATION OF THE BUILDING.



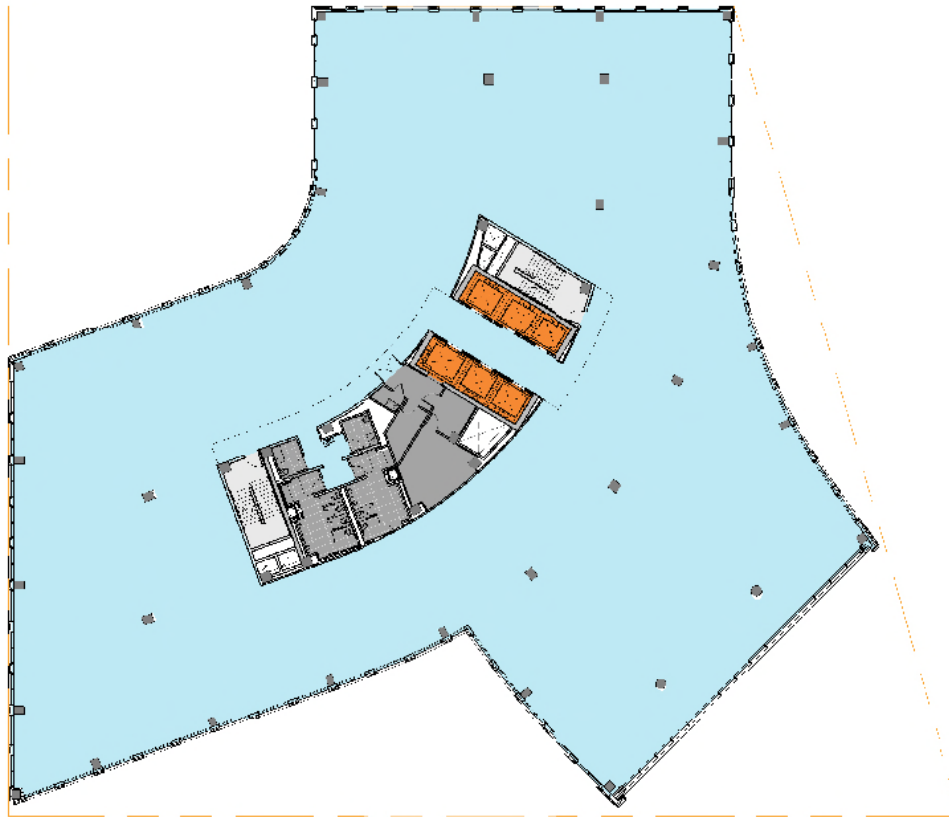
- CIRCULATION
- SERVICE/SUPPORT
- ELEVATOR
- OFFICE
- LANDSCAPE



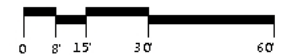
Floor Plan - Level 4 through Level 9

NOTES:

APPLICANT REQUESTS FLEXIBILITY TO VARY THE LOCATION AND DESIGN OF ALL INTERIOR COMPONENTS, INCLUDING PARTITIONS, STRUCTURAL SLABS, DOORS, HALLWAYS, COLUMNS, STAIRWAYS, AND MECHANICAL ROOMS, PROVIDED THAT THE VARIATIONS DON'T CHANGE THE EXTERIOR CONFIGURATION OF THE BUILDING.



- CIRCULATION
- SERVICE/SUPPORT
- ELEVATOR
- OFFICE
- LANDSCAPE



Floor Plan - Level 10



NOTES:

APPLICANT REQUESTS FLEXIBILITY TO VARY THE LOCATION AND DESIGN OF ALL INTERIOR COMPONENTS, INCLUDING PARTITIONS, STRUCTURAL SLABS, DOORS, HALLWAYS, COLUMNS, STAIRWAYS, AND MECHANICAL ROOMS, PROVIDED THAT THE VARIATIONS DON'T CHANGE THE EXTERIOR CONFIGURATION OF THE BUILDING.

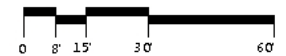
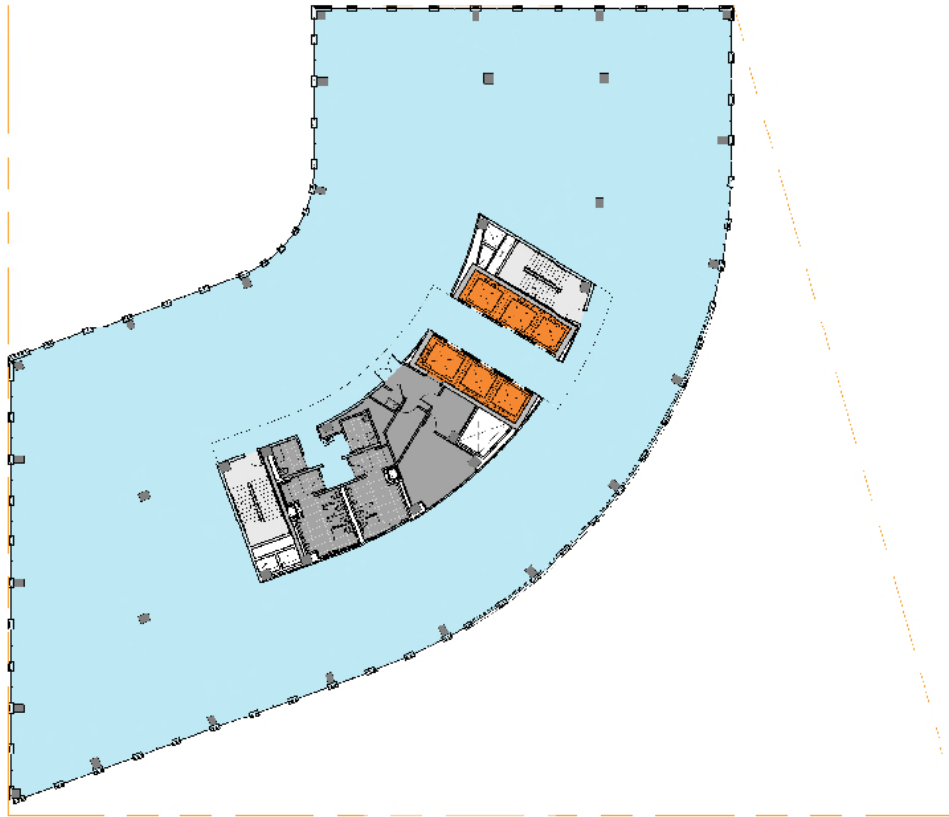
- CIRCULATION
- SERVICE/SUPPORT
- ELEVATOR
- OFFICE
- LANDSCAPE



Floor Plan - Level 11

NOTES:
APPLICANT REQUESTS FLEXIBILITY TO VARY THE LOCATION AND DESIGN OF ALL INTERIOR COMPONENTS, INCLUDING PARTITIONS, STRUCTURAL SLABS, DOORS, HALLWAYS, COLUMNS, STAIRWAYS, AND MECHANICAL ROOMS, PROVIDED THAT THE VARIATIONS DON'T CHANGE THE EXTERIOR CONFIGURATION OF THE BUILDING.

- CIRCULATION
- SERVICE/SUPPORT
- ELEVATOR
- OFFICE
- LANDSCAPE

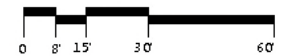


Floor Plan - Penthouse



NOTES:
 APPLICANT REQUESTS FLEXIBILITY TO VARY THE LOCATION AND DESIGN OF ALL INTERIOR COMPONENTS, INCLUDING PARTITIONS, STRUCTURAL SLABS, DOORS, HALLWAYS, COLUMNS, STAIRWAYS, AND MECHANICAL ROOMS, PROVIDED THAT THE VARIATIONS DON'T CHANGE THE EXTERIOR CONFIGURATION OF THE BUILDING.

- CIRCULATION
- SERVICE/SUPPORT
- ELEVATOR
- OFFICE
- LANDSCAPE

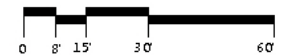


Roof Plan - Penthouse Roof

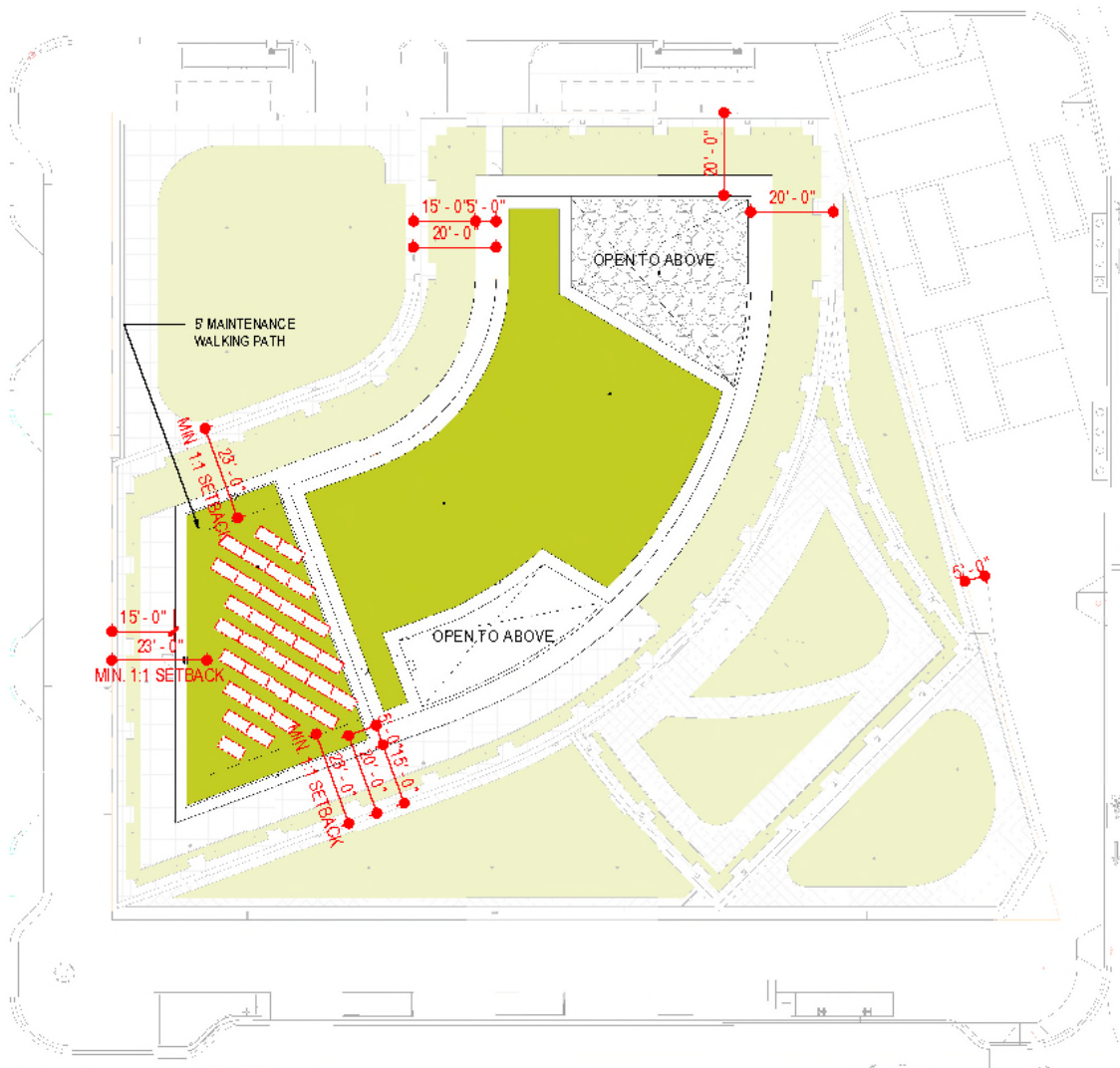


PV Panels

Square footage of roof area for panels & maintenance access: 2,300 sf
Number of Panels: 33
Approximate % of yearly energy usage: 0.5%



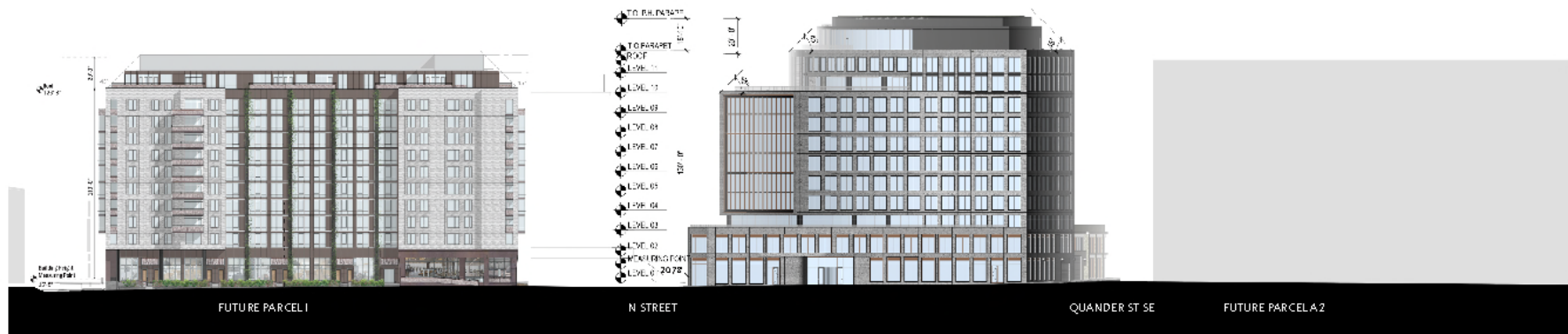
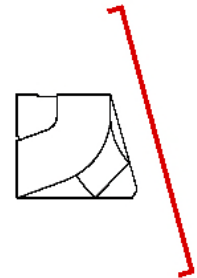
Site Plan



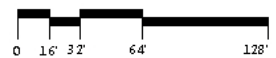
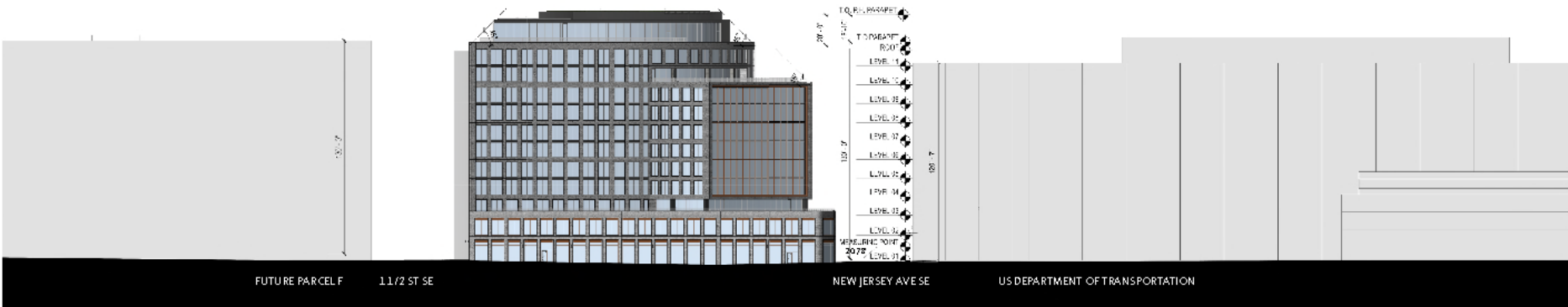
SECTION 4

DESIGN PROPOSAL
Elevations

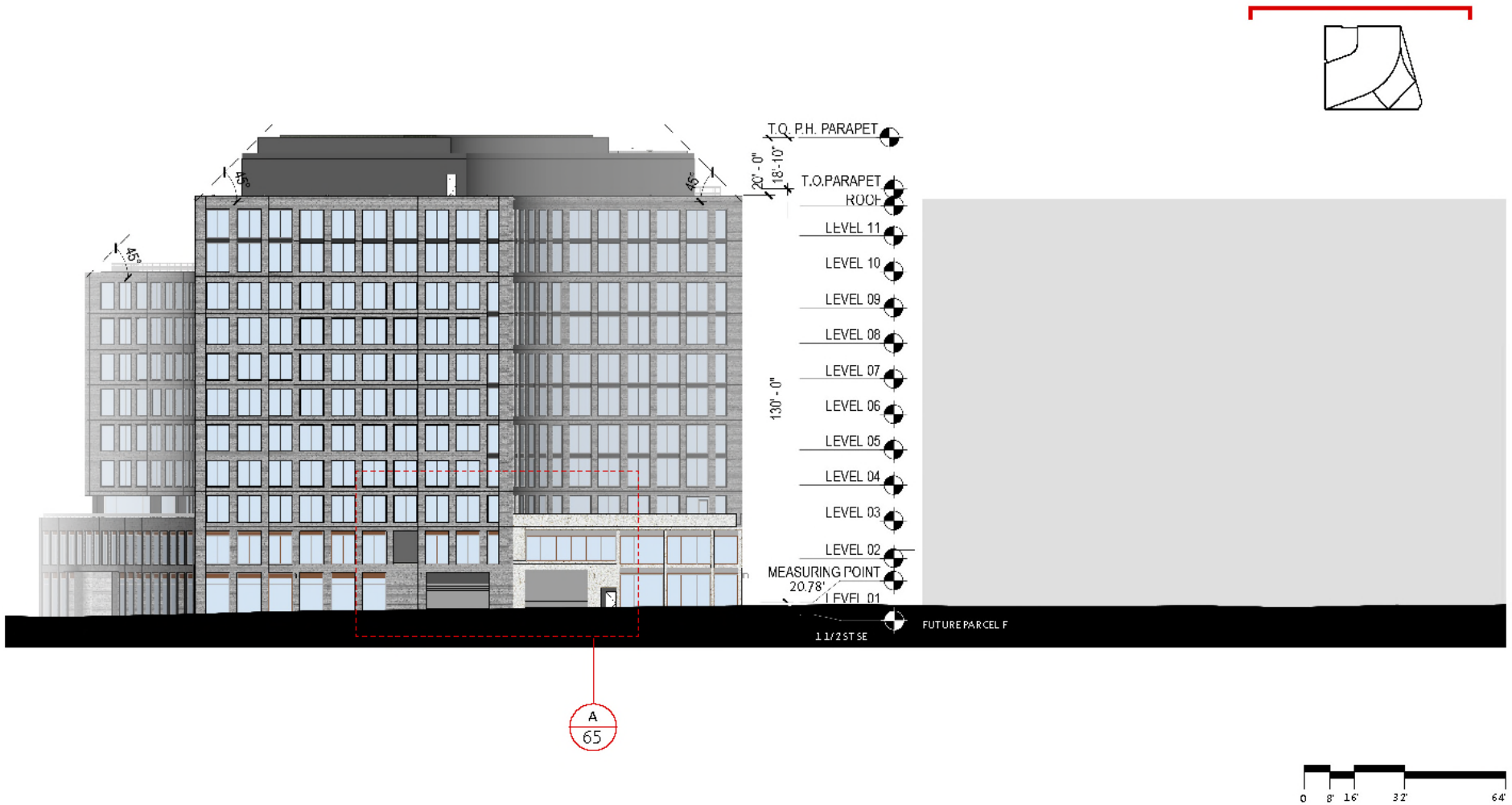
Parcel Elevation - East



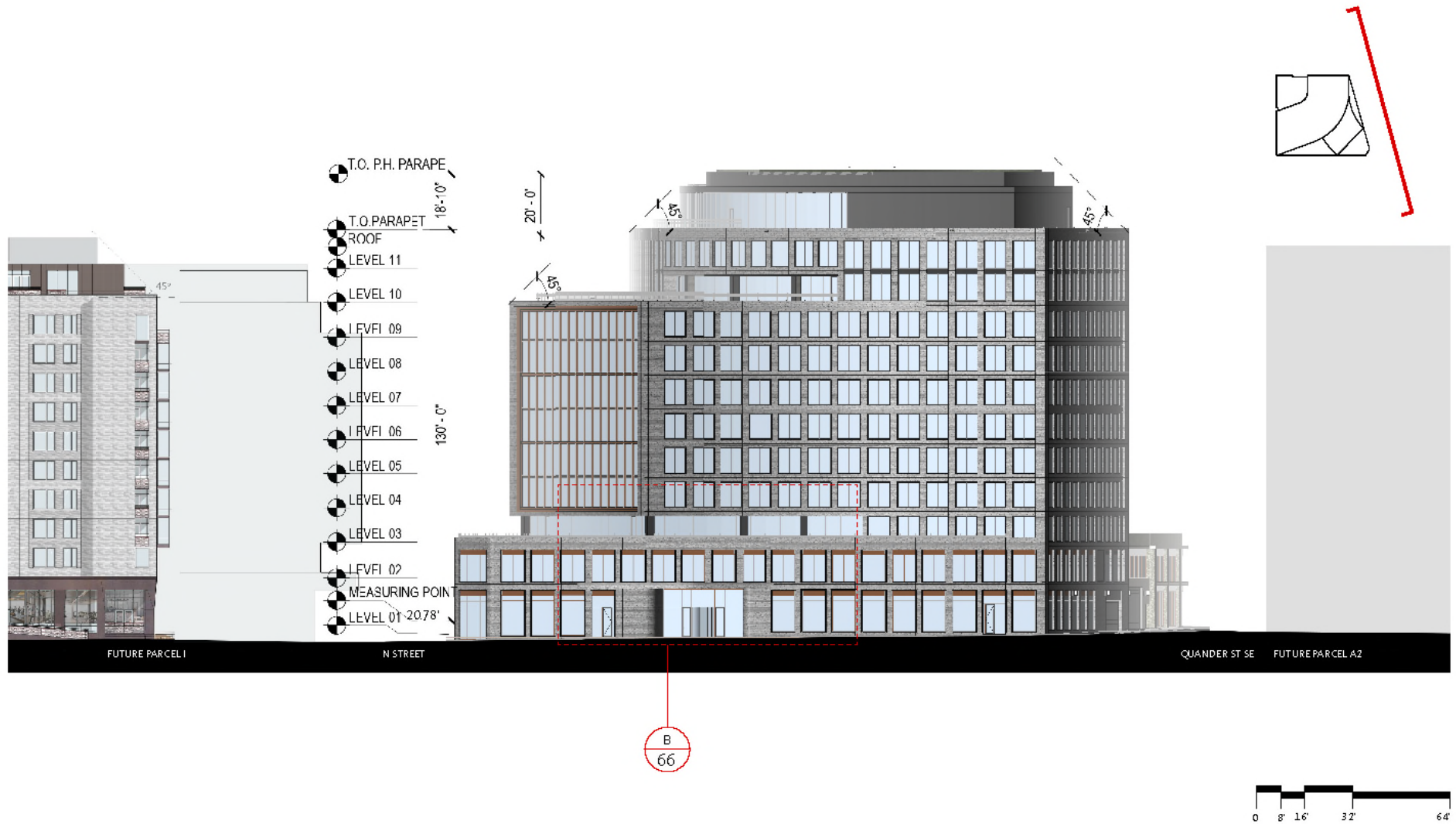
Parcel Elevation - South



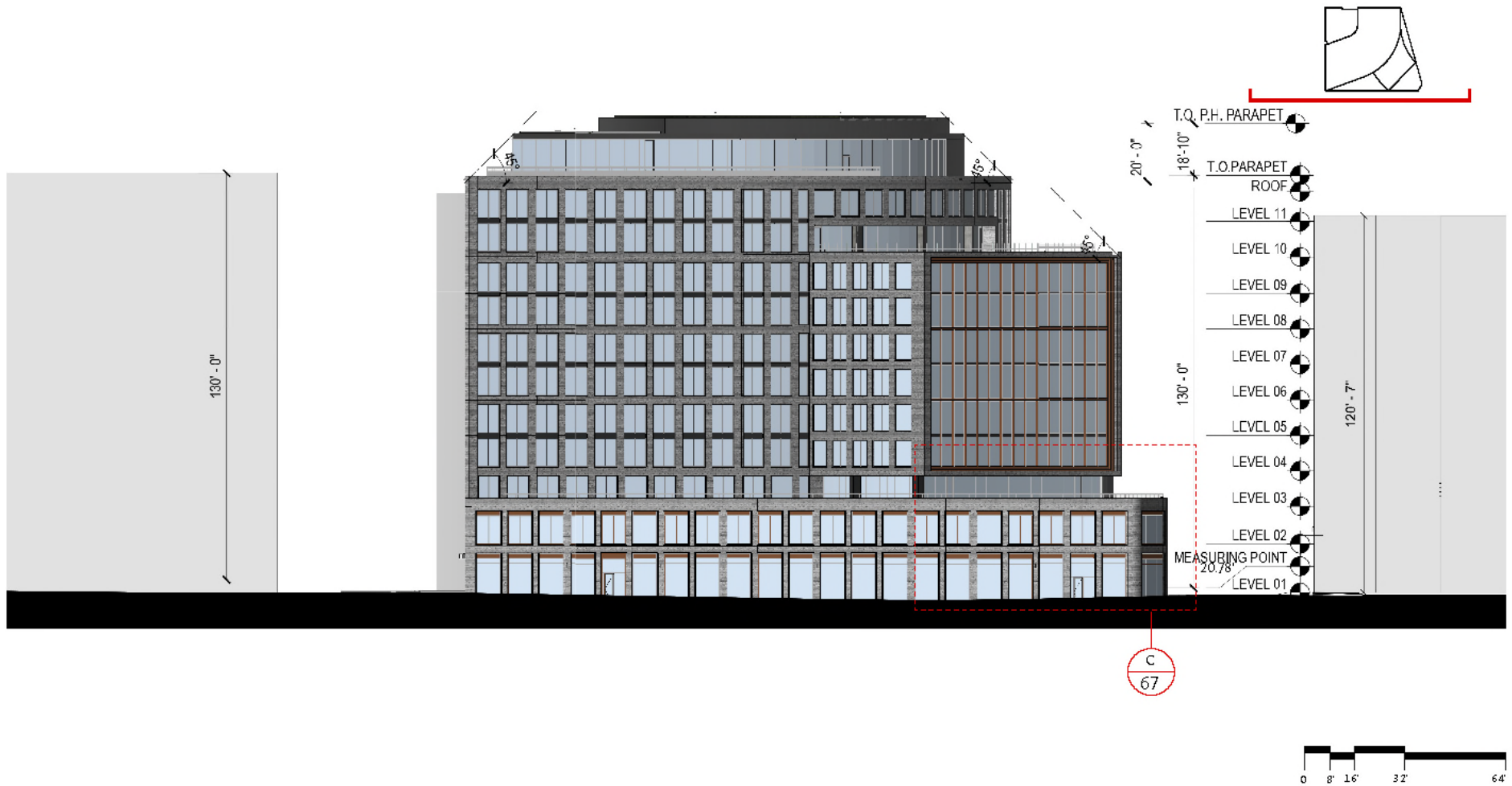
Building Elevation - North



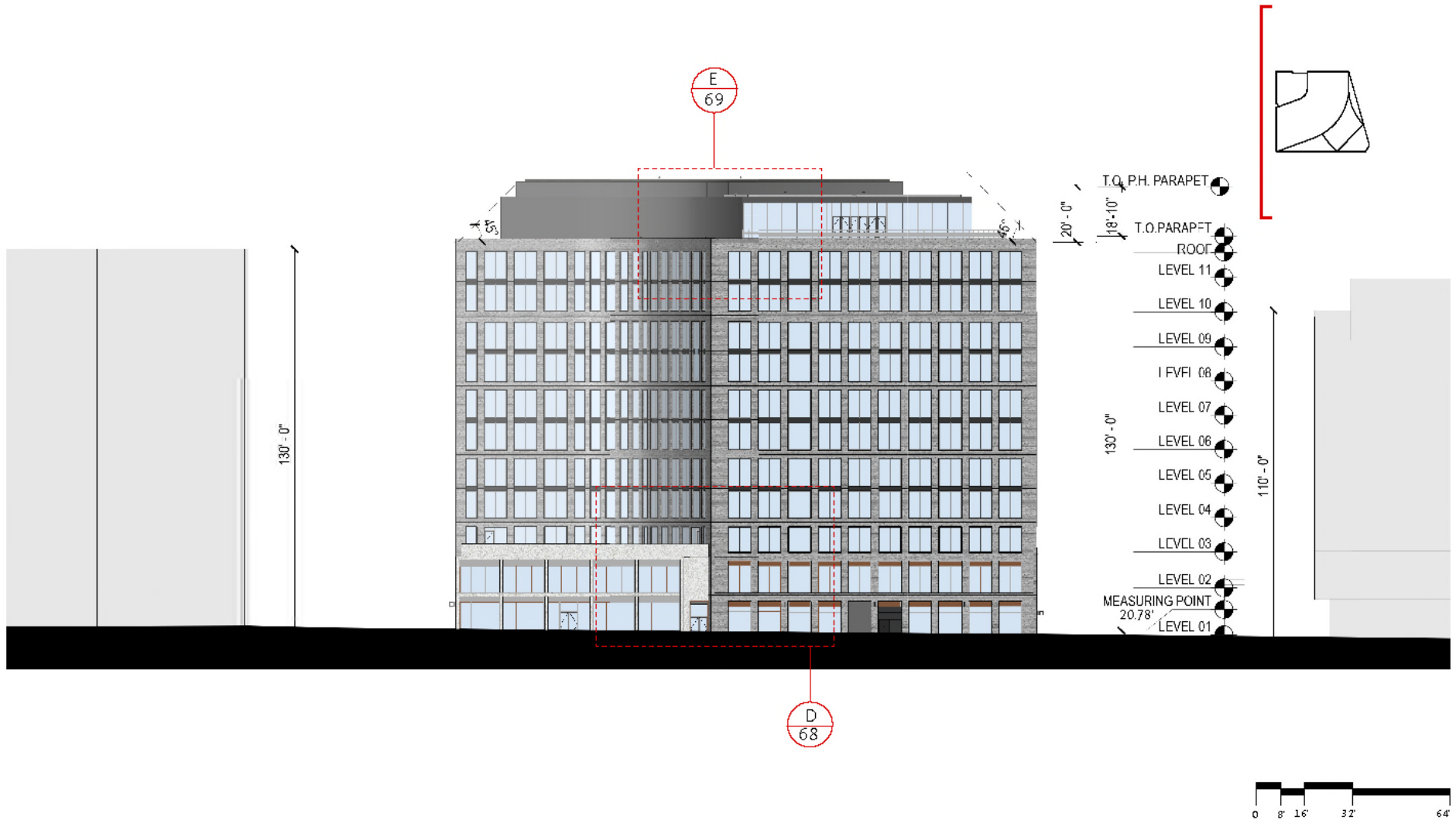
Building Elevation - East



Building Elevation - South



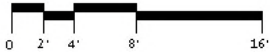
Building Elevation - West



SECTION 5

DESIGN PROPOSAL
Enlarged Elevations

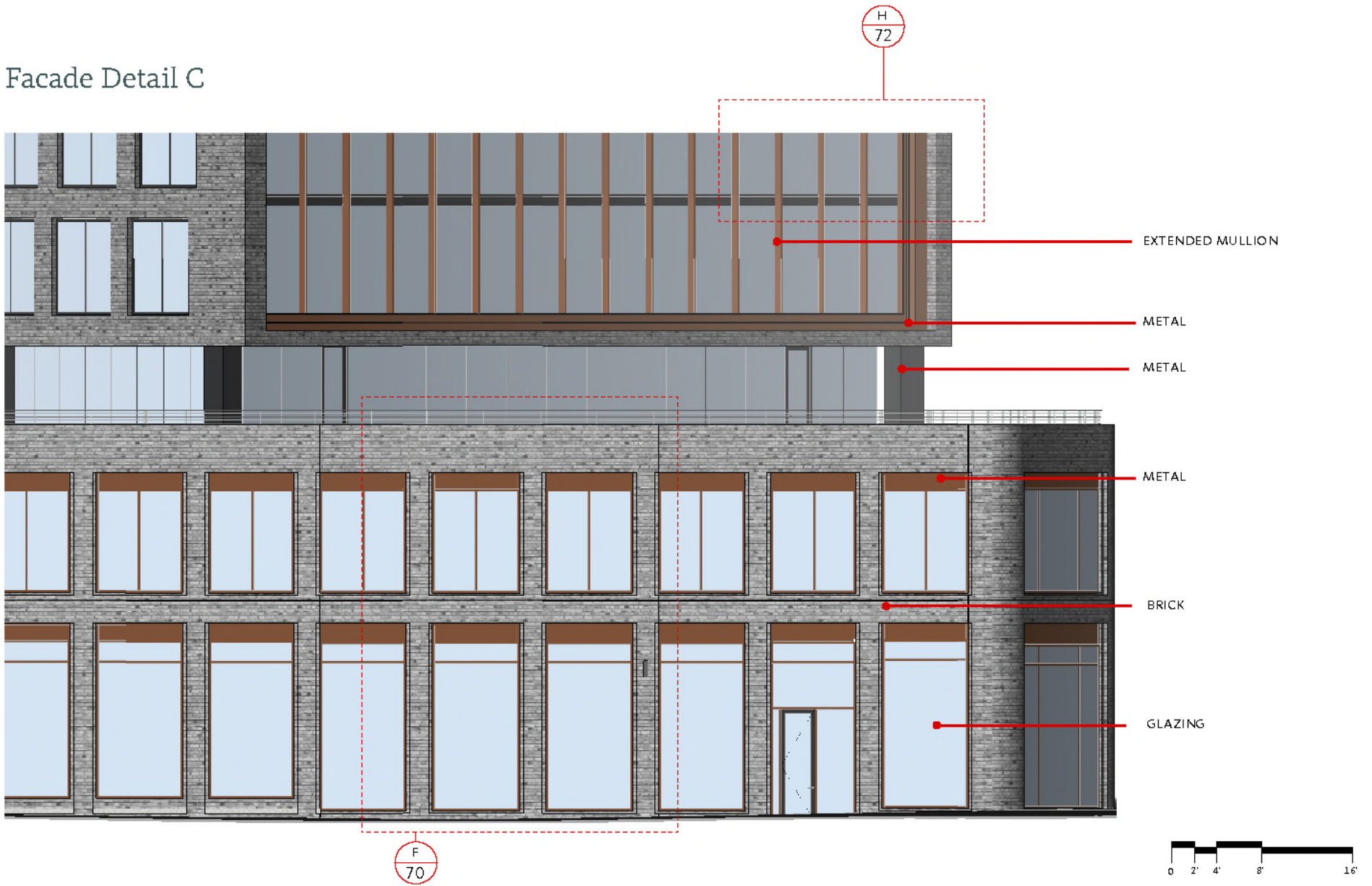
Facade Detail A



Facade Detail B



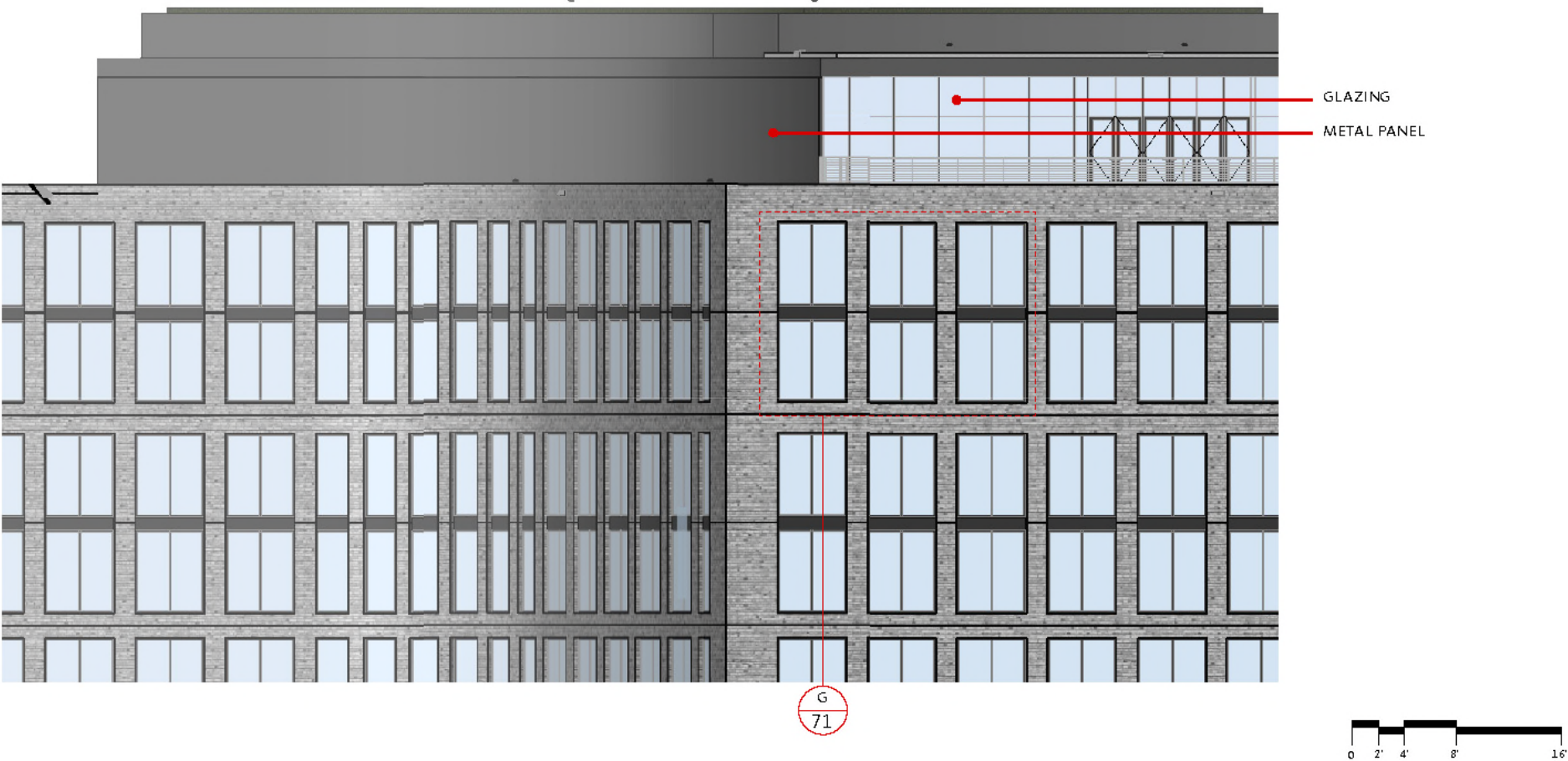
Facade Detail C



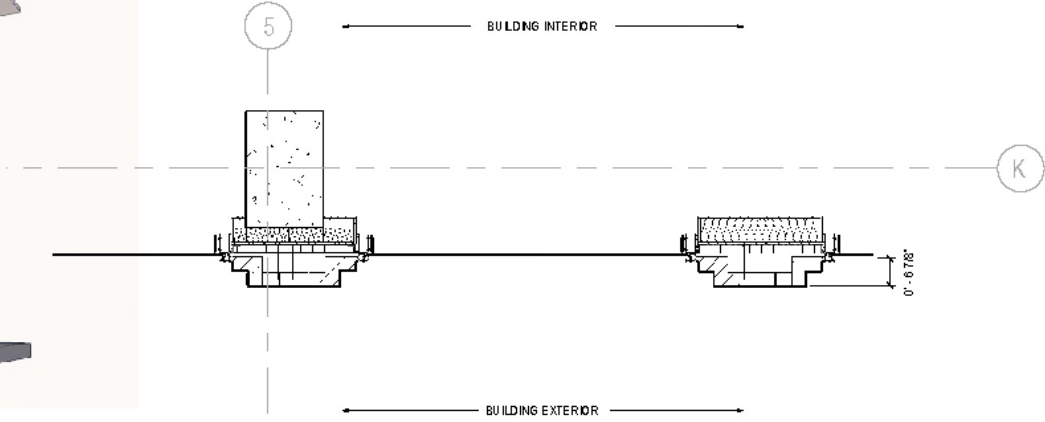
Facade Detail D



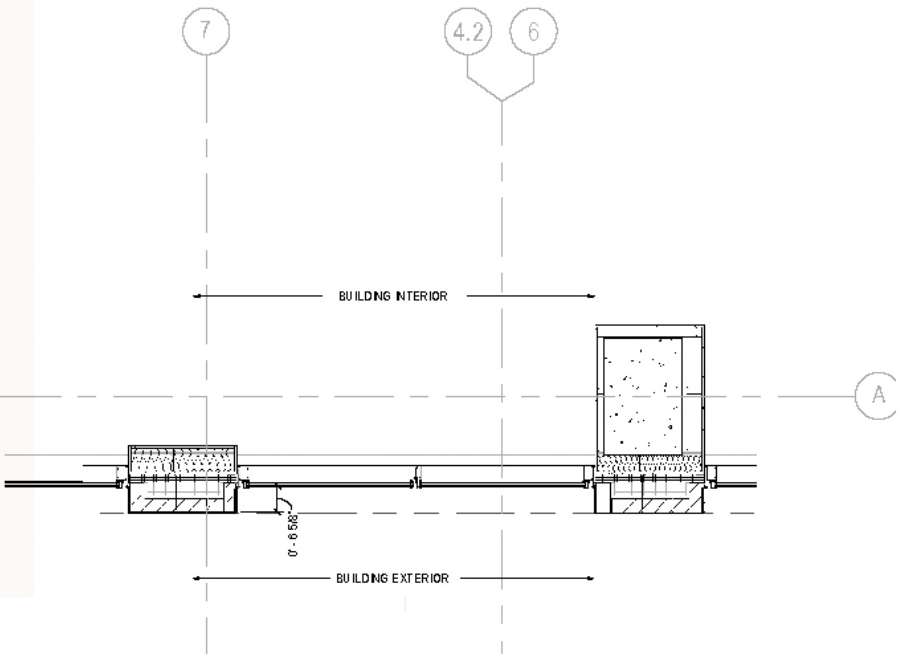
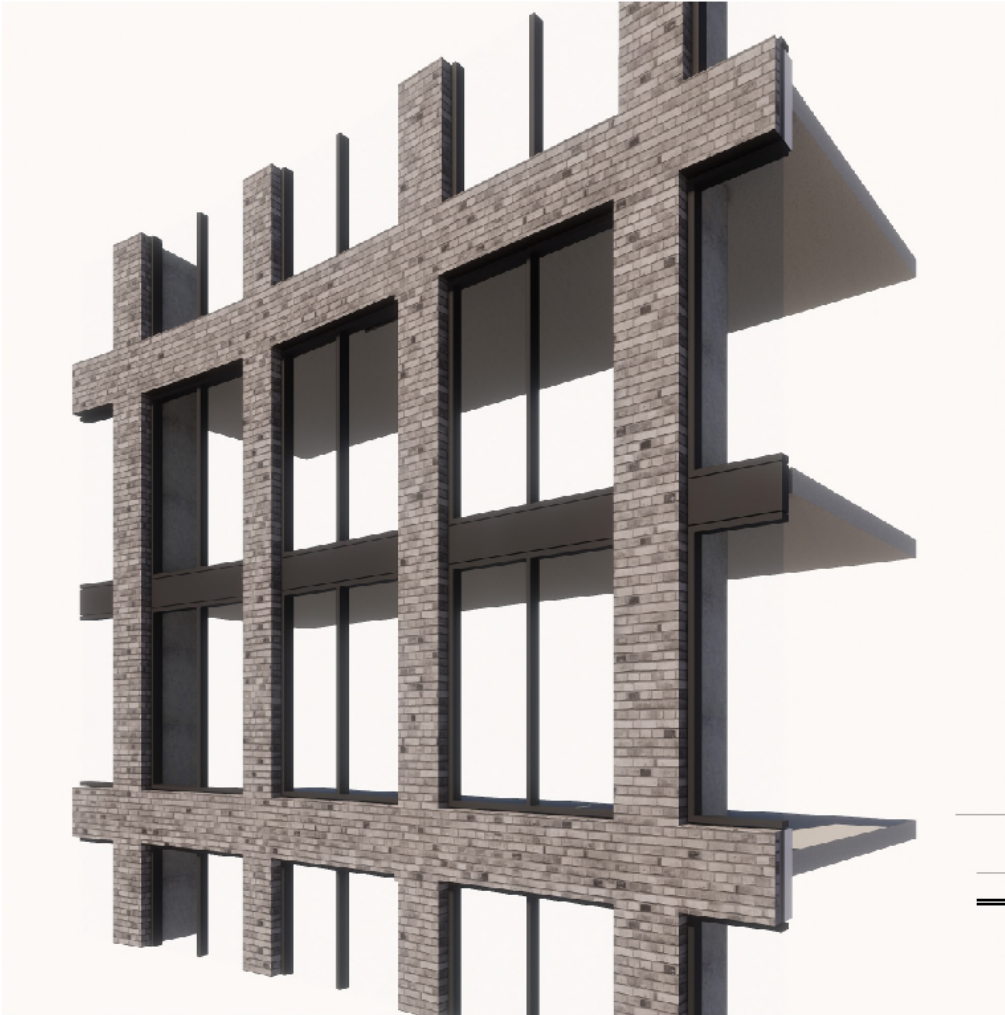
Facade Detail E



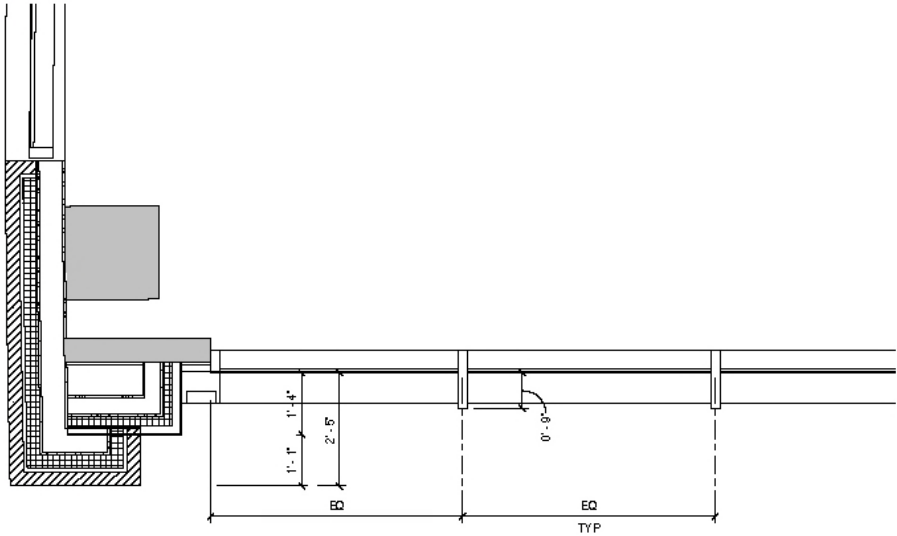
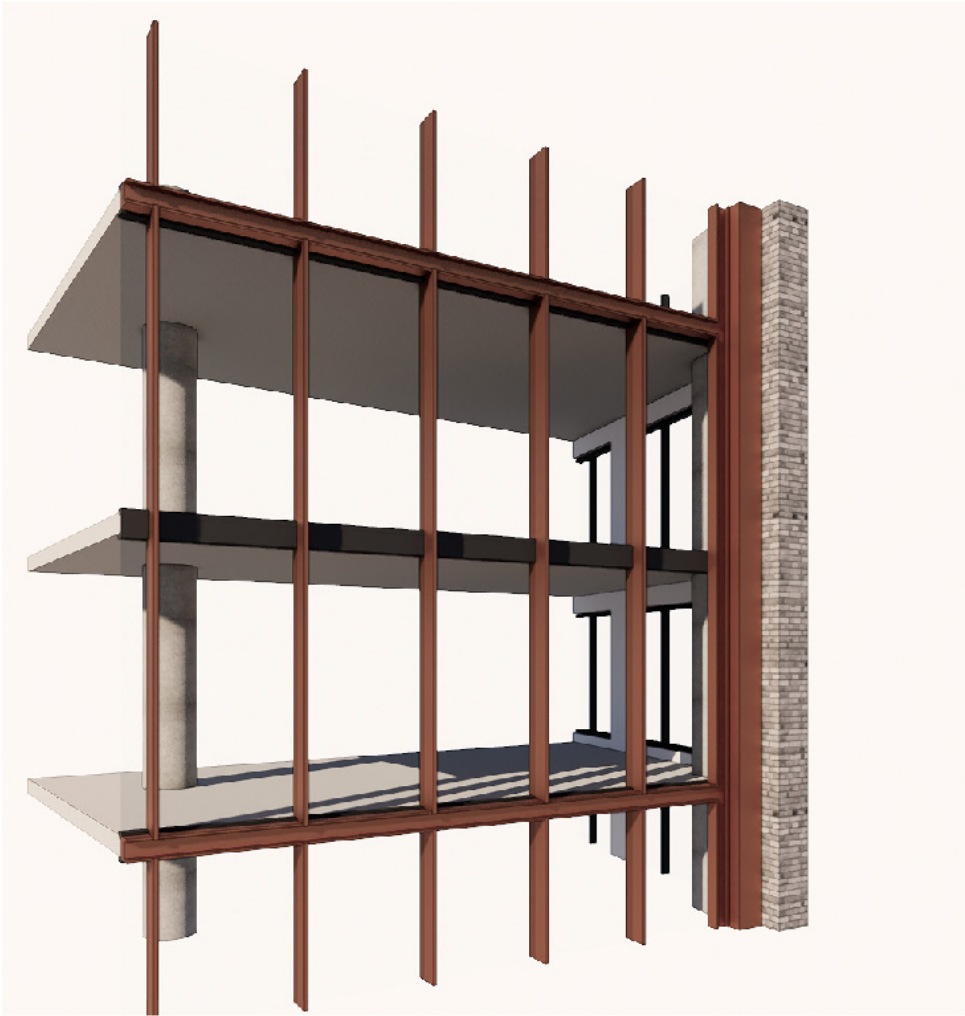
Facade Detail F - Podium



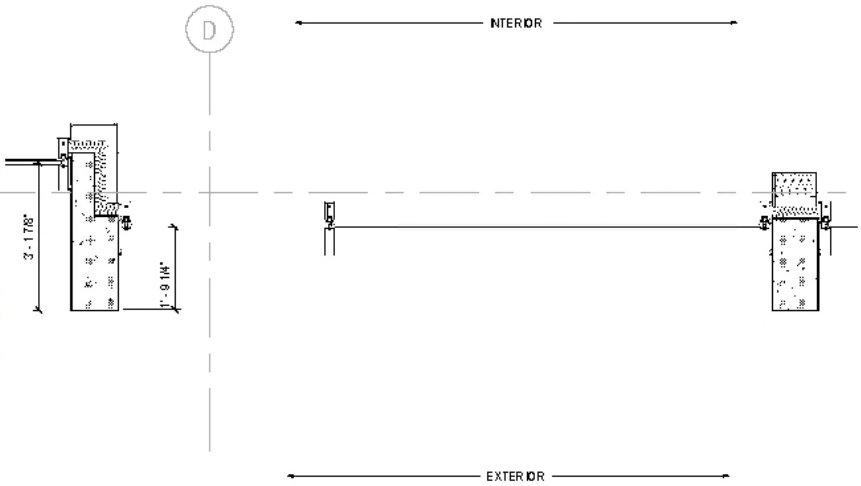
Facade Detail G - Typical Upper Floors



Facade Detail H - Urban Window



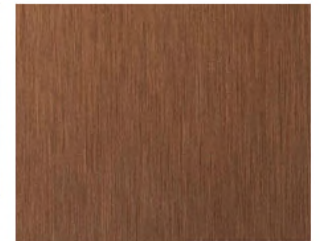
Facade Detail J - Pavilion



Materials



1. BRICK



2. METAL



3. METAL

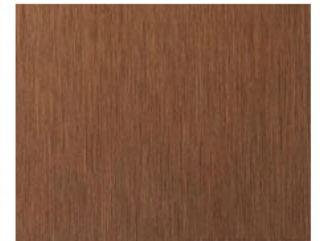


4. PRECAST

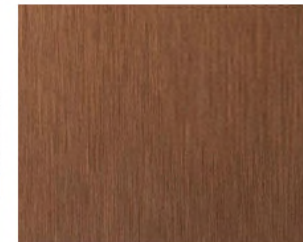
Materials



1. BRICK



2. METAL



3. EXTENDED MULLION

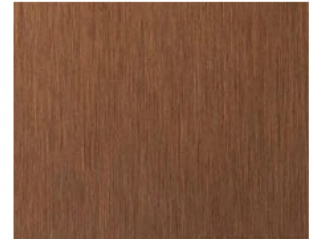


4. METAL

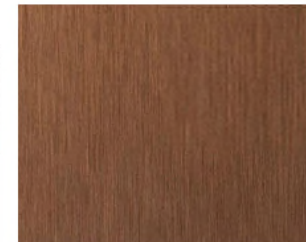
Materials



1. BRICK



2. METAL



3. EXTENDED MULLION



4. METAL

Materials

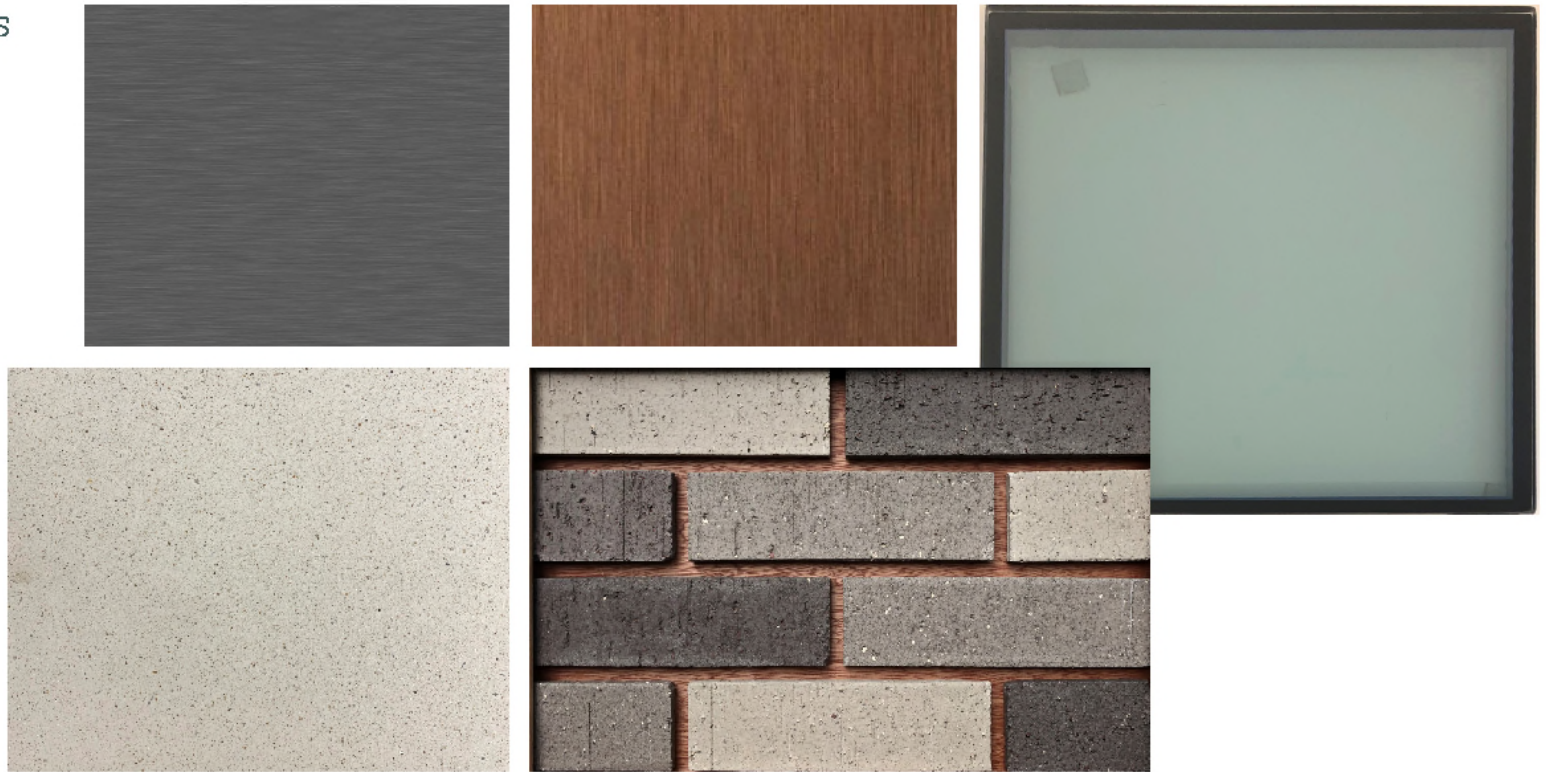


1. BRICK



2. METAL

Photo of Materials



SECTION 6

DESIGN PROPOSAL
Sections